

PLASTICS:

Impacts Across Its Life Cycle



GREENPEACE



GLOBAL PLASTIC PRODUCTION ESTIMATES

1950 | **2M** METRIC TONS | 2017 | **8.3B** METRIC TONS | 2050 | **34B** PROJECTED METRIC TONS



Plastic waste can be recycled, incinerated or discarded where it accumulates in landfills.



TOTAL PLASTIC WASTE

2015 | **6.3B** METRIC TONS

2050 | **12B** PROJECTED METRIC TONS

Source: UC Santa Barbara Bren School of Environmental Science & Management

#breakfreefromplastic

A world without plastics seems unimaginable today, yet their large-scale production and use only dates back to around 1950.



THE PLASTIC LIFECYCLE



Fossil fuel extraction & transport



Production and manufacturing



Consumption



Disposal of plastic waste



Ongoing environmental impact

GREENHOUSE
GASES
ARE EMITTED AT
EACH STAGE OF
THE PLASTIC
LIFECYCLE.

Recommended Reading:

Plastic and Climate: The Hidden Costs of a Plastic Planet

<https://www.ciel.org/wp-content/uploads/2019/05/Plastic-and-Climate-FINAL-2019.pdf>



A SILENT KILLER VIDEO:

<HTTPS://WWW.FACEBOOK.COM/WATCH/?V=1457027567967887>

A SILENT KILLER:

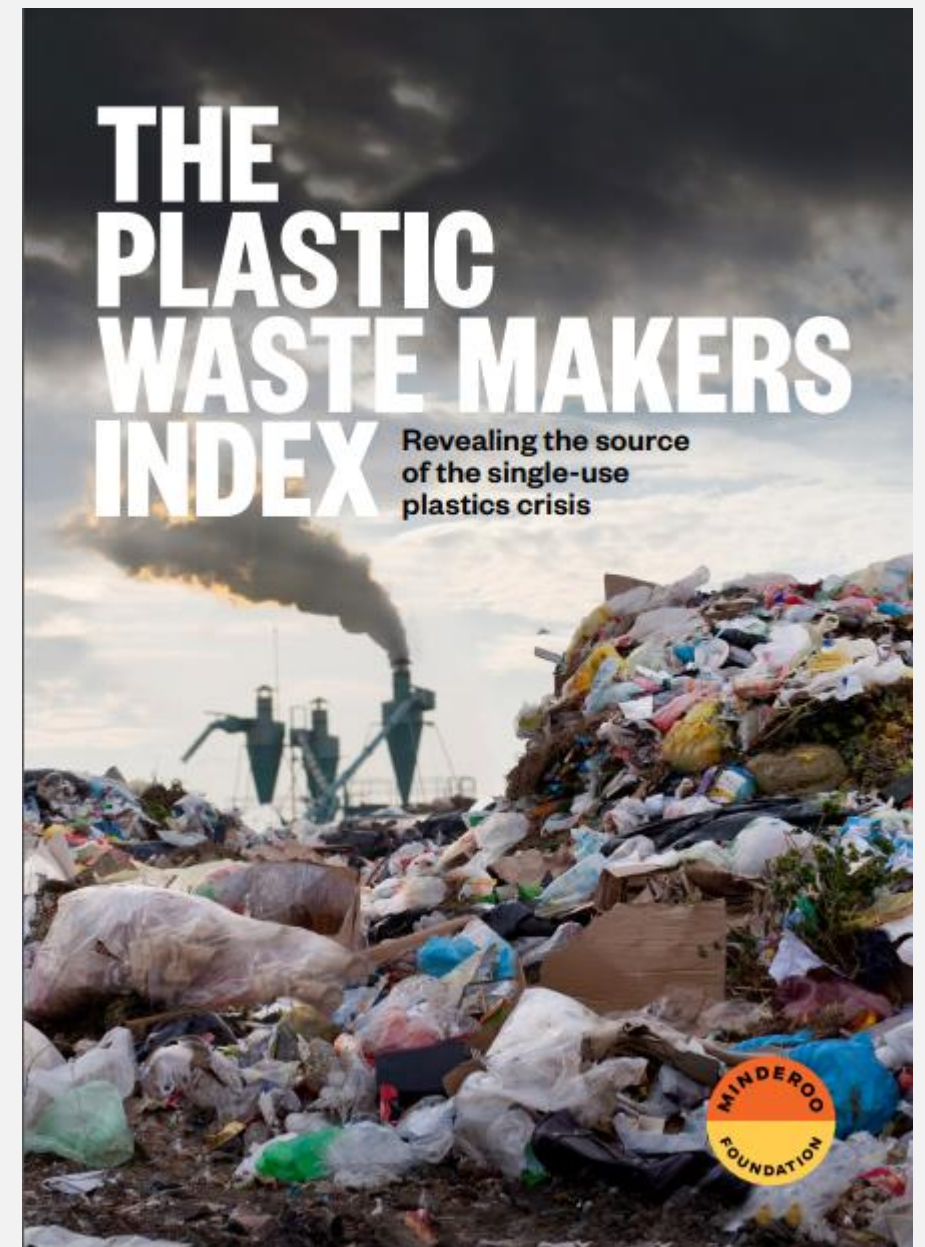
The Horrors of Plastic Production

20 POLYMER
PRODUCERS
PRODUCED MORE
THAN 50% OF
GLOBAL SINGLE-USE
PLASTICS, LED BY
EXXONMOBIL AND
DOW CHEMICAL.

Recommended Reading:

Plastic Waste Makers Index

<https://cdn.minderoo.org/content/uploads/2021/05/06123145/20210518-Plastic-Waste-Makers-Index.pdf>



SINGLE USE PLASTICS (SUP)

SUPs are disposable plastics, designed or placed in the market and designed to be used **only once**.





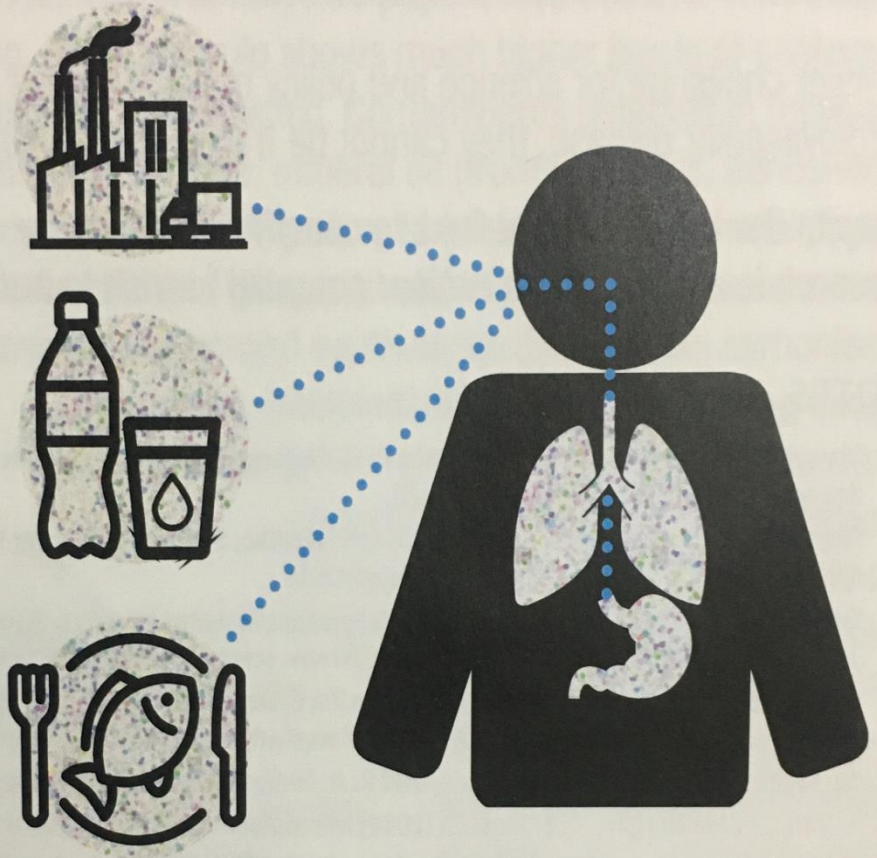
"CONTAINS"
THOUSANDS
OF CHEMICALS
INCLUDING AT LEAST 148 HIGHLY
HAZARDOUS SUBSTANCES.

#BREAKFREEFROMPLASTIC

Recommended Reading:

The Unwrapped Project

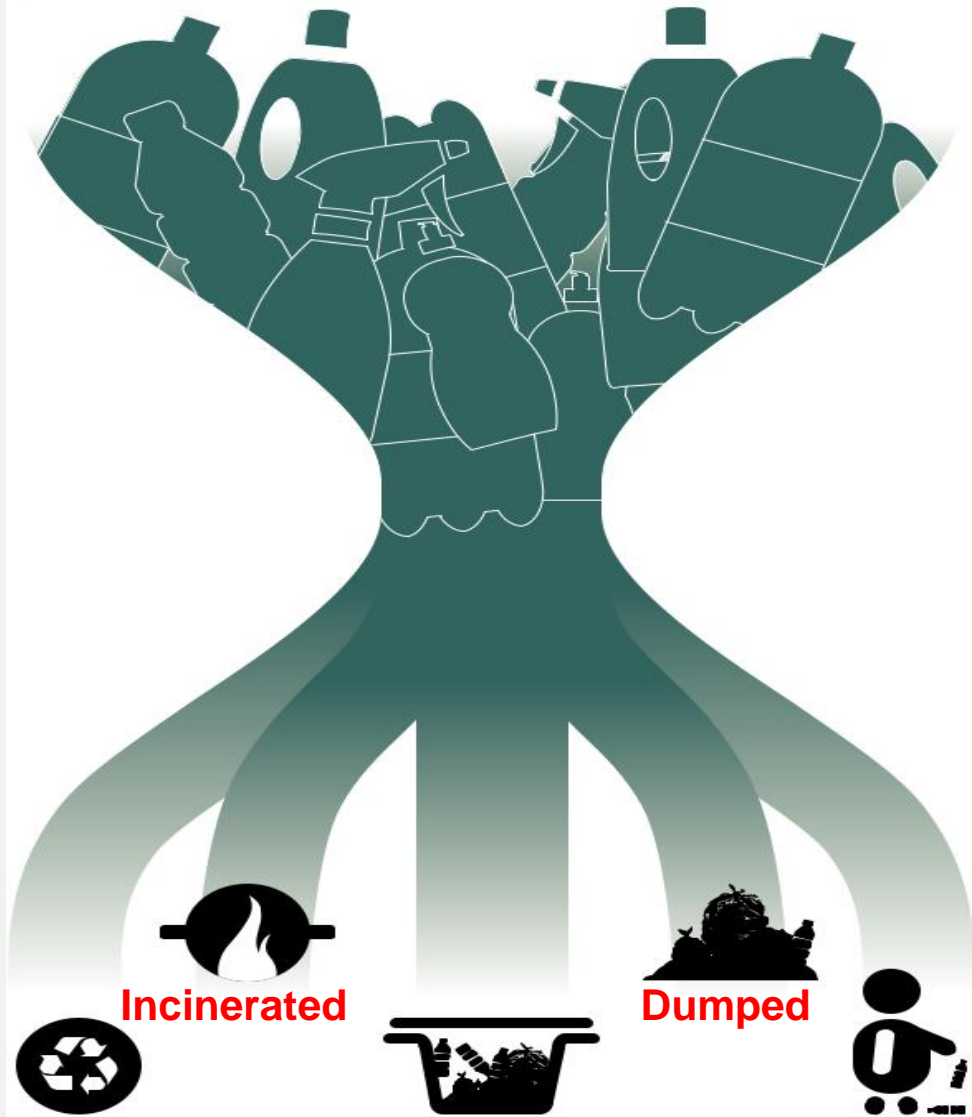
<https://unwrappedproject.org/about>



Humans are exposed to micro-plastics through the air, water, and food chain.



Plastics at end-of-life



Recycled

Landfilled

Littered in the environment

**ONLY 9% OF ALL PLASTIC
EVER MADE HAS BEEN
RECYCLED.**

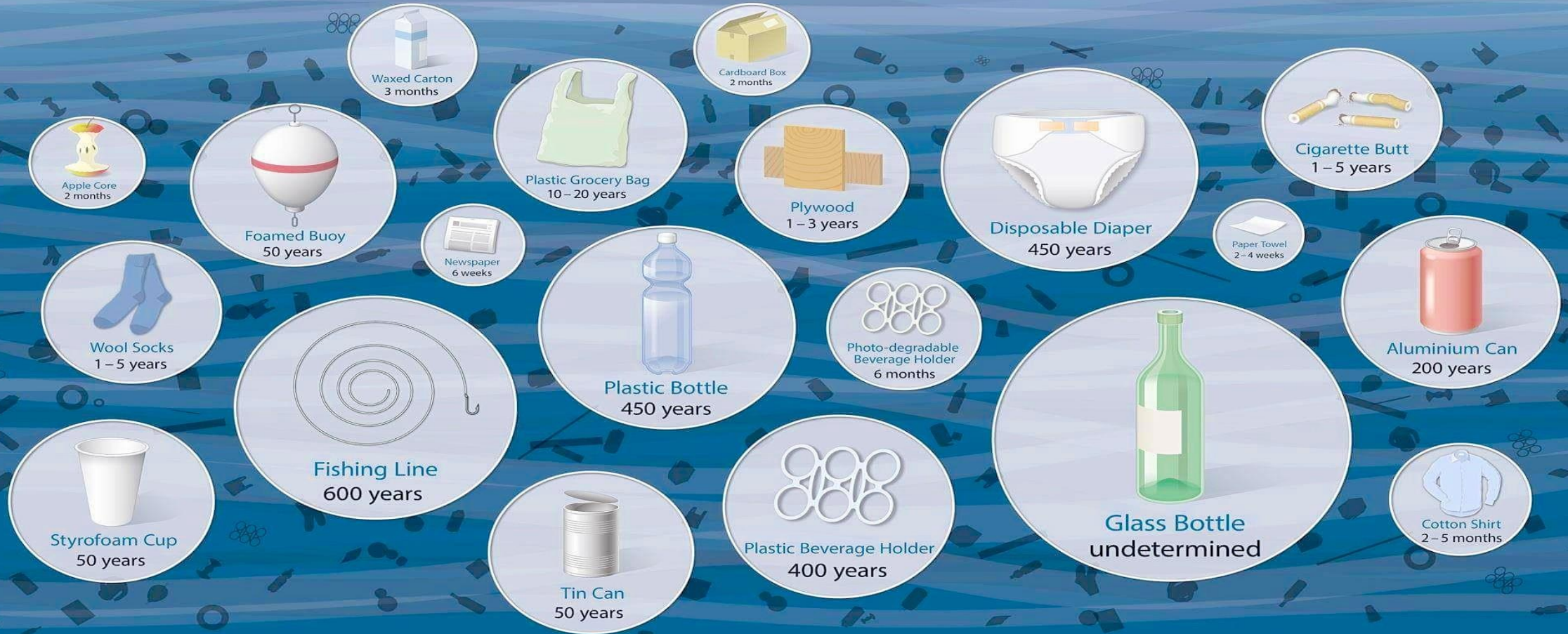


THE REST IS POLLUTION.

#BreakFreeFromPlastic

HOW LONG UNTIL IT'S GONE?

Estimated decomposition rates of common marine debris items



Estimated individual item timelines depend on product composition and environmental conditions.

Source: NOAA (National Oceanic and Atmospheric Administration), US / Woods Hole Sea Grant, US
Graphics: Oliver Lüde / Museum für Gestaltung Zürich, ZHdK

TOP PH CORPORATE PLASTIC POLLUTERS





RECOMMENDATIONS



INSTITUTE A NATIONAL BAN ON SINGLE-USE AND PROBLEMATIC PLASTIC PRODUCTS



IMPOSE ACCOUNTABILITY AND LIABILITY ON CORPORATIONS



IMPLEMENT ECO-FRIENDLY AND ALTERNATIVE PRODUCT PACKAGING AND DELIVERY SYSTEMS



IMPOSE HEFTY PENALTIES TO CORPORATIONS AND INDIVIDUALS FOR THEIR PLASTIC AND WASTE POLLUTION



SUPPORT CITIES AND COMMUNITIES IN THEIR PROGRAMS AGAINST SINGLE-USE PLASTICS AND PACKAGING PRODUCTS



Follow Us:



@EWCoalition

@breakfreefromplastic

@noburnpilipinas